



# Crown, Bridge & Veneers

## Temporary Crown & Veneers



### UnoCore DC Core Build Up

A dual-curing highly radiopaque and fluoride-containing flowable composite with excellent mechanical properties for core build-up.

2 x 5ml twin-barrel AutoMix syringes, 10 x mixing tips, 10 x intra-oral tips.

FCA020



### Temporary Crown Kit

Made from high quality polycarbonate which is resilient to mouth fluids and can be trimmed without risk of damage.

80 assorted crowns (3 of each size) & organiser.

TCS480



### UnoTemp SC

A cold-curing, two paste system with multi-phase polymerisation for temporary crowns & bridges, inlays & onlays.

Shades A1, A2, A3. 50ml.

TEU010, TEU012, TEU014



### Laminate Veneer Kit

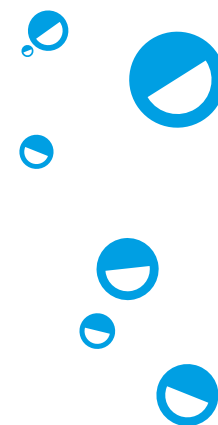
Contains 10 diamond burs.  
Tiger Stripes (0.3 & 0.5mm),  
290/010 (T10), 290/010U/F (T10U), 556,  
546 Long, 557U/F,  
561U/F, 290/012 (T12),  
290/012U/F (T12U).

BD008

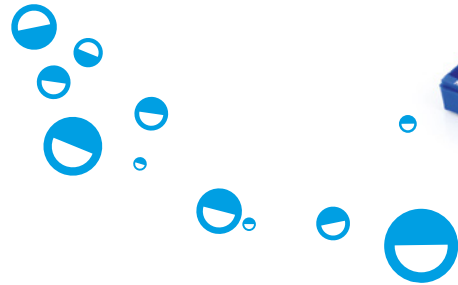
### Why you love UnoDent

"I'm a great fan of Unodent UnoTemp SC temporary crown and bridge material. It sets and polishes well and the shade matches are accurate. The end result can look as good as a permanent crown!"

Dr Gillian Leslie



# Crown Forms



## Clear Crown Forms

Centrals	Central-Cervical Part Enlarged						Ex-Large Centrals							
Reference	1	11	21	31	41	51	101	111	121	131	141	151	161	171
Left	TCE001	TCE011	TCE021	TCE031	TCE041	TCE051	TCE101	TCE111	TCE121	TCE131	TCE141	TCE151	TCE161	TCE171
Right	TCE301	TCE311	TCE321	TCE331	TCE341	TCE351	TCE401	TCE411	TCE421	TCE431	TCE441	TCE451	TCE461	TCE471

Laterals	Bi-Cuspids					Canines							
Reference	2	12	22	32	42	4	5	14	15	24	3	13	23
Left	TCE002	TCE012	TCE022	TCE032	TCE042	TCE004	TCE005	TCE014	TCE015	TCE024	TCE003	TCE013	TCE023
Right	TCE302	TCE312	TCE322	TCE332	TCE342	TCE304	TCE305	TCE314	TCE315	TCE324	TCE303	TCE313	TCE323

Ex-Large Canines	Lower Canines		Molar				Lower Incisors					
Reference	33	43	203	213	6	7	16	17	201	202	211	212
Left	TCE033	TCE043	TCE203	TCE213	TCE006	TCE007	TCE016	TCE017	TCE201	TCE202	TC211	TCE212
Right	TCE333	TCE343	TCE503	TCE513	TCE306	TCE307	TCE316	TCE317	TCE501	TCE502	TCE511	TCE512

# Crown Forms

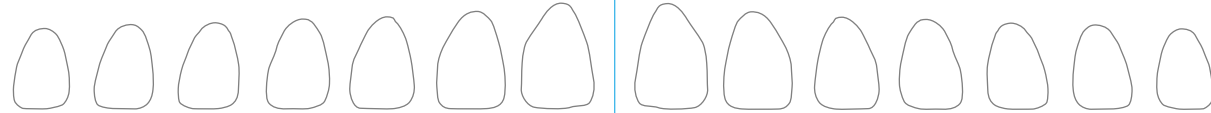


## Polycarbonate Crowns

### Upper Central Incisor

Left

Right

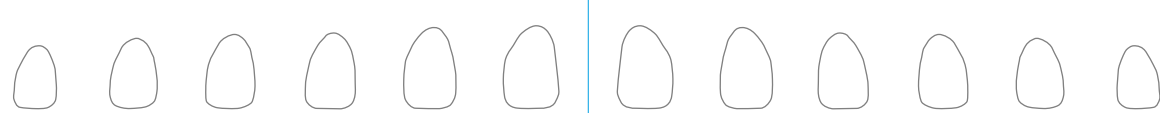


Reference	15	16	17	18	19	102	103	100	101	10	11	12	13	14
Code	TCS015	TCS016	TCS017	TCS018	TCS019	TCS102	TCS103	TCS100	TCS101	TCS010	TCS011	TCS012	TCS013	TCS014

### Upper Lateral Incisor

Left

Right



Reference	25	26	27	28	29	200	2	20	21	22	23	24
Code	TCS025	TCS026	TCS027	TCS028	TCS029	TCS200	TCS002	TCS020	TCS021	TCS022	TCS023	TCS024

### Upper Premolars



Reference	40	41	42	43	44
Code	TCS040	TCS041	TCS042	TCS0043	TCS044

### Lower Premolars



Reference	50	51	52	53	54
Code	TCS050	TCS051	TCS052	TCS053	TCS054

### Lower Incisors

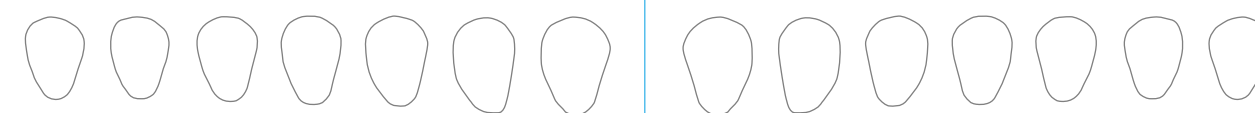


Reference	60	61	62	63	64	65	66	67	68	69
Code	TCS060	TCS061	TCS062	TCS063	TCS064	TCS065	TCS066	TCS067	TCS068	TCS069

### Upper Canines

Left

Right



Reference	35	36	37	38	39	302	303	300	301	30	31	32	33	34
Code	TCS035	TCS036	TCS037	TCS038	TCS039	TCS302	TCS303	TCS300	TCS301	TCS030	TCS031	TCS032	TCS033	TCS034

# Crown & Bridge Instruments



## Crown & Bridge Remover

Stainless Steel. Moveable weight. 3 different tips. Autoclavable. DCR300

Replacement tips. Pack 3: DCR301. DCR306



## Crown Scissors - Bee-Bee

Curved. Autoclavable. Each. DSD310



## Crown Preparation Kit

8 diamond burs for bevelling margins. 290/010 (T10), 290/012 (T12), 556, 556C, 554C, 557U/F, 558F, 546. BD001



## Crown Lift Kit

Automatic Crown and Bridge Remover. 3 tips. Autoclavable. 1 handle, 1 pin, 1 plate and 3 hooks. DCR305



## Crown Scissors - Bee-Bee

Straight. Autoclavable. Each. DSD315



## Tissue Austin 2

Autoclavable. Each. DRE020



## Minnesota Flap

Autoclavable. Each. DRE125



## Oringer Cheek

Autoclavable. Each. DRO217



## Gum Flap (Rake)

Autoclavable. Each. DRE120



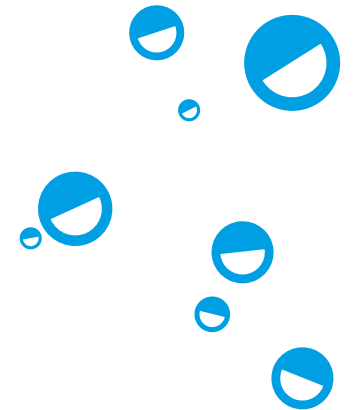
## Kilner

Autoclavable. Each. DRE015



## Bowdler Henry

Autoclavable. Each. DRE010



Why you love  
UnoDent

"The Crown and bridge remover can be used with one hand."