



Burs

[Click the product codes to view more information](#)

Sterile Diamond Burs

Individually Packed Diamond Burs

Box 25.

Cylinder FG



541 542 607 730 745

Medium Grit

BES541 BES542 BES607 BES730 BES745

Round End Tapered FG



639 640 710 714

Medium Grit

BES639 BES642 BES710 BES715

Fine Grit

BES638 BES641 BES709 BES714

Extra Fine Grit

- BES640 - BES713

Pear FG



566

Medium Grit

BES566

Truncated Cone FG



556

Medium Grit

BES556

Round FG



520 708

Medium Grit

BES520 BES708

Round Collar FG



526

Medium Grit

BES526

Flame FG



724

Medium Grit

BES726

Fine Grit

BES725

Extra Fine Grit

BES724

Flame Cone FG



562

Fine Grit

BES563

Extra Fine Grit

BES562

Diamond Burs

Individually Packed Diamond Burs

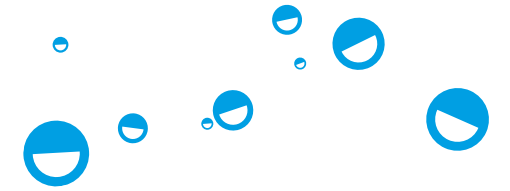
Non-sterile. Each.

Cylinder FG	541	541S	542	543	546	607	657	659	700	710	730	745
Medium Grit	BD541	BD541S	BD542	BD543	BD546	BD607	BD657	BD659	BD700	BD710	BD730	BD745
Coarse Grit	BD541C	-	BD542C	-	BD546C	-	-	-	-	-	-	BD745C
Long Shank	-	-	-	-	BD546L	-	-	-	-	-	-	-

Pear FG	565	566	567	569	Diablo FG	536	537	538	608	721
Medium Grit	BD565	BD566	BD567	-	Medium Grit	BD536	BD537	BD538	BD608	BD721
Coarse Grit	-	BD2342	BD2344	BD2348						

Round FG	519	520	520S	521	522	645	708	646
Medium Grit	BD519	BD520	BD520S	BD521	BD522	BD645	BD708	-
Coarse Grit	-	-	-	BD521C	BD522C	-	-	BD001C
Fine Grit	-	-	-	-	BD522F	-	-	-
Ultra Fine Grit	-	-	-	-	BD522U	-	-	BD001S

Wheel FG	512	513	514	619
Medium Grit	BD512	BD513	BD514	BD619



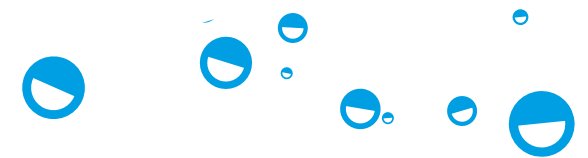
Round with Collar FG	525	526	527
Medium Grit	BD525	BD526	BD527

Round HP	101	102
Coarse Grit	BHU101	BHU102

Diamond Burs

Individually Packed Diamond Burs

Non-sterile. Each.



Round End Tapered FG	501	502	503	504	635	636	637	639	640	713	714
Medium Grit	BD501	BD502	BD503	BD504	BD635	BD636	BD637	BD639	BD640	BD713	BD714
Coarse Grit	-	-	-	-	-	-	BD637C	-	-	-	-
Extra Fine Grit	-	-	-	-	-	-	-	BES637	-	-	-

Truncated Cone FG	550	551	552	554	555	556	556S	557	559	560	622	623
Medium Grit	BD550	BD551	BD552	BD554	BD555	BD556	BD556S	BD557	BD559U	BD560	BD622	BD623
Coarse Grit	-	-	-	BD554C	-	BD556E	-	BD557C	-	-	-	BD623C
Fine Grit	-	-	-	-	-	BD556F	-	-	-	-	-	-
Ultra Fine Grit	-	-	-	-	-	BD556U	-	BD557U	-	-	-	-

Truncated Cone FG	624	626	627	629	630	712
Medium Grit	BD624	BD626	BD627	BD629	BD630	BD712
Coarse Grit	-	BD626C	-	-	-	-

Double Truncated Cone FG	632
Medium Grit	BD632

Subgingival Flame FG	540
Medium Grit	BD540

Inverted Cone FG	530	531	534	535	709
Medium Grit	BD530	BD531	BD534	BD535	BD709

Flame RA	247
Medium Grit	BGU247

Diamond Burs

Individually Packed Diamond Burs

Non-sterile. Each.

Flame FG	
	562 563 564 582 650 651 652 675 719 723 724
Medium Grit	BD562 BD563 BD564 BD582 BD650 BD651 - BD675 BD719 BD723 BD724
Coarse Grit	- - - - - - - - - -
Fine Grit	BD562F - - BD582F - - - - -
Ultra Fine Grit	BD562U - BD564U BD582U BVU650 BVU651 BVU652 - - -

Cylindrical Domed FG		Cylindrical Bulk Reducers FG	
	544 545 729 731		CY1 CY2 CY3 CY4
Medium Grit	BD544 BD545 BD729 BD731	Medium Grit	BDB001 BDB002 BDB003 BDB004

Cylindrical Pointed FG	
	561 613 615 716 290/010 290/012
Medium Grit	BD561 BD613 BD615 BD716 BD2900 BD2902
Coarse Grit	- - - - -
Fine Grit	BD561F - - - -
Ultra Fine Grit	BD561U - - - BD2901 BD2903

Conical Bulk Reducers FG	
	519-018S 519-018S 521-019 513-017
Medium Grit	BDB006 BDB007 BDB008 BDB005

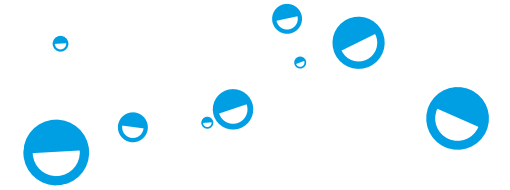
Tapered Pointed FG	
	558 753
Medium Grit	BD558 BD753
Coarse Grit	- -
Fine Grit	BD558F -

Tiger Stripe FG	
	0.3mm 0.5mm
Medium Grit	BDTS03 BDTS05

Gold Diamond Burs

Individually Packed Diamond Burs

Non-sterile. Each.



Round FG



001/010 001/012 001/014 001/016 001/018 001/021 001/023

Medium Grit	BJM051	BJM052	BJM053	BJM054	BJM055	BJM056	BJM057
Coarse Grit	-	-	-	-	-	-	BJM058
Fine Grit	-	-	-	-	BJM059	-	-
Extra Fine Grit	-	-	-	-	BJM061	-	-
Ultra Fine Grit	-	-	-	-	BJM063	-	-

Round with Collar FG



002/012 002/017

Medium Grit	BJM070	BJM071
-------------	--------	--------

Cylinder FG



108/009 109/010 109/012 109/015 110/014 111/012 111/014

Medium Grit	BJM150	BJM151	BJM152	BJM153	BJM170	BJM180	BJM181
Coarse Grit	-	-	-	BJM158	-	-	BJM186

Round End Cylinder FG



139/009 139/012

Medium Grit	BJM201	BJM202
-------------	--------	--------

Flat End Taper FG



171/012 171/015 172/014 173/014 173/016 173/018

Medium Grit	BJM240	BJM241	BJM251	BJM270	BJM271	BJM272
Coarse Grit	-	BJM246	-	-	BJM277	-
Fine Grit	-	-	-	-	BJM281	-

Inverted Cone FG



225/013 225/019

Medium Grit	BJM100	BJM101
-------------	--------	--------

Round End Taper FG



198/014 198/017 199/014 199/016 199/018

Medium Grit	BJM363	BJM364	BJM302	BJM303	BJM304
-------------	--------	--------	--------	--------	--------

Inverted Cone with collar FG



019/012 019/017

Medium Grit	BJM091	BJM092
-------------	--------	--------

Gold Diamond Burs

Individually Packed Diamond Burs

Non-sterile. Each.



247/013 001/012

Fine Grit	BJM422	BJM437
Extra Fine Grit	BJM423	BJM440



233/016 237/012 238/012

Medium Grit	BJM132	BJM130	BJM133
-------------	--------	--------	--------



167/012 166/017

Medium Grit	BJM400	BJM402
Coarse Grit	-	-
Fine Grit	BJM405	-
Ultra Fine Grit	BJM409	-



257/020

Fine Grit	BJM006
Extra Fine Grit	BJM009
Ultra Fine Grit	BJM012



130/012

Fine Grit	BJM583
-----------	--------



Twister Diamond Burs

Individually Packed Diamond Burs

Non-sterile. Each.



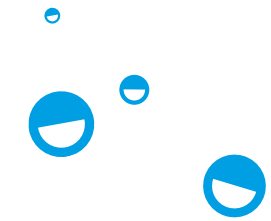
257/023 197/020 198/015 198/016 198/020 199/016

Coarse Grit	BDT025	BDT000	BDT005	BDT010	BDT015	BDT020
Extra Coarse Grit	BDT055	BDT030	BDT035	BDT040	BDT045	BDT050



257/023 197/020 198/015 198/016 198/020 199/016

Coarse Grit	BDT085	BDT060	BDT065	-	BDT075	BDT080
Extra Coarse Grit	BDT115	BDT090	BDT095	BDT100	BDT105	BDT110



Twister Kit

12 burs – 6 shapes, each in both coarse and extra coarse. Contains: 257/023, 197/020, 198/015, 198/016, 198/020, 199/016. BDT200

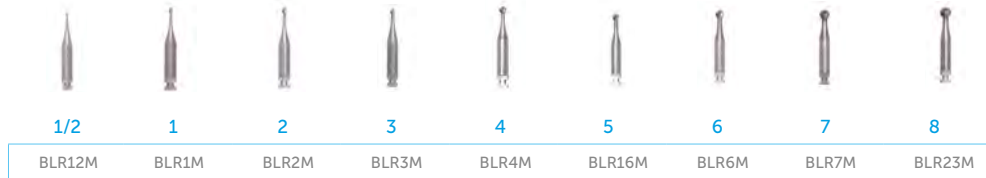
Gold Twister Kit

12 burs – 6 shapes, each in both coarse and extra coarse. Contains: 257/023, 197/020, 198/015, 198/016, 198/020, 199/016. BDT300

Steel Burs

Non-sterile. Pack 6.

Round Miniature Head RA



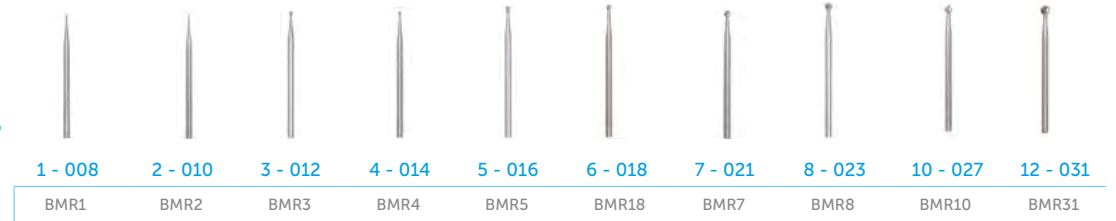
Round RA



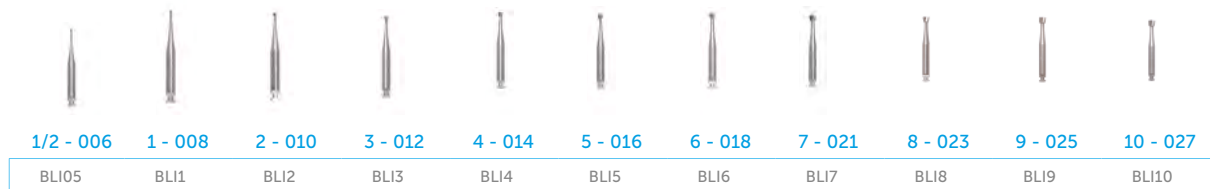
Round RA



Round HP



Inverted Cone RA



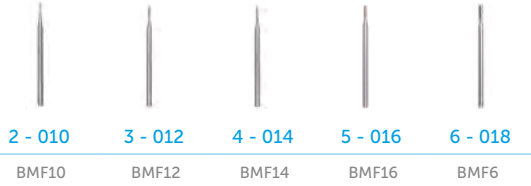
Tapered Fissure RA Cross Cut



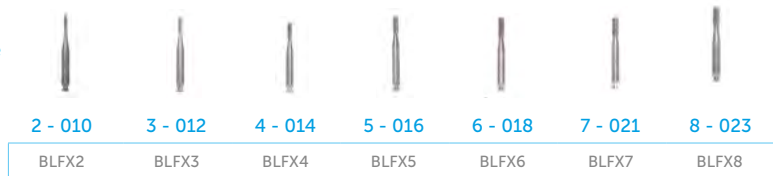
Steel Burs

Non-sterile. Pack 6.

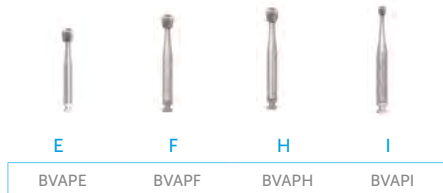
Flat Fissure HP



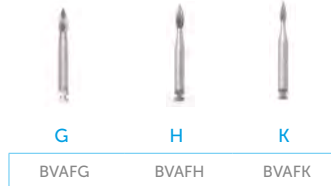
Flat Fissure RA Cross Cut



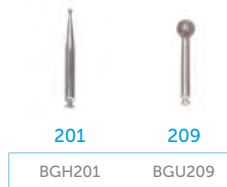
Finishing Burs Pear RA



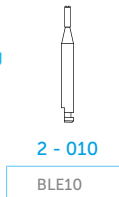
Finishing Burs Flame RA



Round RA



End Cutting RA



Tungsten Carbide Burs

Non-sterile.

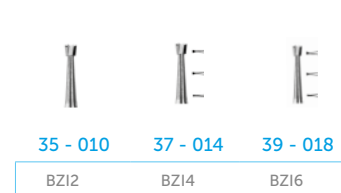
Round FG Plain Cut



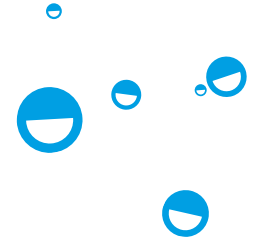
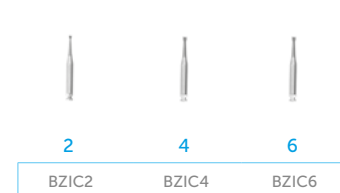
Round RA Plain Cut



Inverted Cone FG Plain Cut



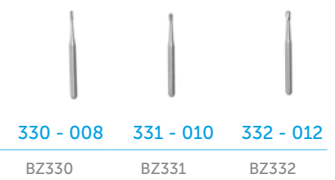
Inverted Cone RA Plain Cut



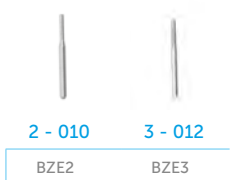
Tungsten Carbide Burs

Non-sterile.

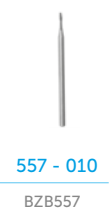
Pear
Amalgam FG
Plain Cut



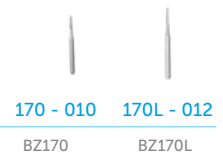
End
Cutting FG



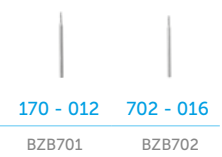
Flat Fissure
HP Cross Cut



Taper Fissure
FG Plain Cut



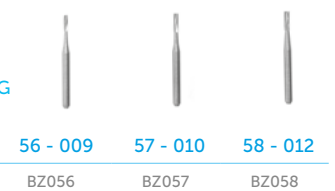
Taper Fissure
FG Plain Cut



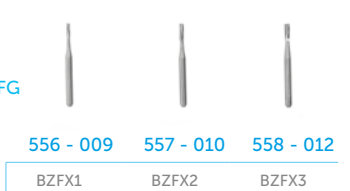
Dome Fissure
FG Plain Cut



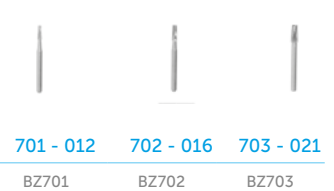
Flat Fissure FG
Plain Cut



Flat Fissure FG
Cross Cut



Taper Fissure
FG Cross Cut



Straight
Fissure FG
Fine Cross
Cut - Flat



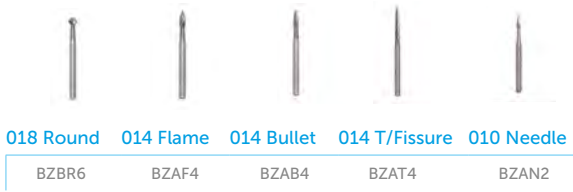
Dome Fissure
FG Cross Cut



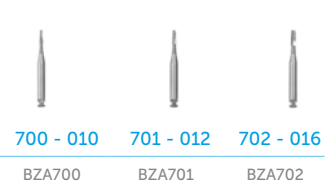
Flat Fissure RA
Cross Cut



Finishing
Burs



Taper Fissure
FG Cross Cut



Straight
Fissure FG
Fine Cross
Cut - Dome



Tungsten Carbide Burs

WildCat Burs

Non-sterile. Pack 5.

FG Plain Cut

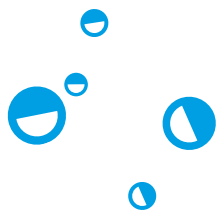


	3 - 012	1157 - 010	1158 - 012	330 - 008	331 - 010	332 - 012	57 - 010
Shape	Round	Dome F	Dome F	Pear Am	Pear Am	Pear Am	Flat F
	BWR3	BW1157	BW1158	BW330	BW331	BW332	BW057

FG Cross Cut



	1157 - 010	1158 - 012	557 - 010	558 - 012	2057 - 010	1958 - 012
Shape	Dome F	Dome F	Flat F	Flat F	Flat	Dome
	BW1557	BW1558	BWFX2	BWFX3	BW2057	BW1958



Bur Kits



Crown Preparation Kit

8 diamond burs for bevelling margins, shoulder preparation, bulk reduction, molar and premolar preparation, interproximal finishing, final finishing and crown preparation.

Contains: 290/010, 290/012, 556, 556C, 554C, 557U/F, 558F, 546.

BD001



Cavity Preparation Kit

8 diamond burs used for small penetration, cavity preparation, undercutting and extension of cavity. Contains: 520, 527, 531, 567, 541, 541C, 542, 537.

BD004



Composite & Porcelain Finishing Kit

10 ultrafine diamond burs specifically for trimming and finishing composite material, crown preparation finishing, and porcelain veneer after cementation trimming.

Contains: 290/010, 290/012, 556, 556C, 554C, 557U/F, 558F, 546.

BD006



Laminate Veneer Kit

10 diamond burs including 'Tiger Stripes' which cut to a depth of 0.3mm or 0.5mm, diamonds to clean off stripes and luting cement, and ultrafine finishers for complete aesthetics.

Contains: Tiger Stripes (0.3mm & 0.5mm), 290/010, 290/010U/F, 556, 546 Long, 557U/F, 561U/F, 290/012, .290/012U/F.

BD008

Bur Holders



12 Hole - Chrome Plated

Each.
 FG BXS020
 RA BXS025



24 Hole - Chrome Plated Inserts

Autoclavable at 121°C (except lids). Each.
 FG BXS090
 RA BXS091
 HP BXS092
 FG/RA BXS093



24 Hole - Aluminium

Blue, Red or Yellow. Each.
 FG BXS065, BXS070, BXS075
 RA BXS066, BXS071, BXS076
 HP BXS067, BXS072, BXS077
 FG/RA BXS068, BXS073, BXS078



48 Hole - Plastic Stand

Polypropylene. Autoclavable up to 134°C. Each.
 Small BXS203



12 Hole - Plastic

With Lid. Autoclavable to 134°C (except lids). Each.
 FG BXS055
 RA BXS056
 HP BXS057
 FG/RA BXS058



24 Hole - Plastic

With Lid. Autoclavable to 134°C (except lids). Each.
 FG BXS060
 RA BXS061
 HP BXS062
 FG/RA BXS063



43 Hole - Magnetic Bur Holder

Non autoclavable. Blue, White or Red. Each.
 BXS040, BXS041, BXS042



72 Hole - Plastic Stand

Polypropylene. Autoclavable up to 134°C. Each.
 FG BXS205
 RA BXS206



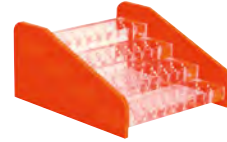
72 Hole - Plastic

Polypropylene. Autoclavable up to 134°C. Each.
 FG BXS201
 RA BXS202



Metal Etched Stand

Autoclavable. Aluminium. Each.
 BXU001



112 Hole - Plexiglass

Not Autoclavable. Each.
 FG BXS198



Bur Disinfecting Box

White plastic. Each.
 BXU010

Bur Brushes



Pencil Type - Disposable

Non Autoclavable. Each.
 BXB007



Pencil Type - Autoclavable

Autoclavable. Each.
 BXB008



Brush Type - Disposable

Non Autoclavable. Each.
 BXB009

